



Advanced Radio Tester

Product Fact Sheet



Target Markets

- Manufacturing Test for Cellular Infrastructure
- Service and Repair Centres
- R&D Automated Test systems
- Optical to RF masthead product emulation

Product Description

Designed from its inception to satisfy the needs of manufacturing test users, the AceAxis Advanced Radio Tester (ART) contains all the necessary RF and baseband functionality for fast, repeatable and traceable testing within a single 1U box.

In association with a dedicated PC or as part of a larger ATE system, a rich set of multiple, simultaneous Uplink and Downlink measurements can be captured, logged and displayed.

ART incorporates RF functionality usually only found in discrete test equipment such as signal generators, spectrum and network analyzers. In addition, the inclusion of two *small form-factor pluggable* interfaces (SFP) enables direct optical connection to Remote Radio Head (RRH) products

The ART is available with a range of supporting Software to enable quick deployment and integration into your test environment

Main Features and Benefits

A fully capable test solution in a single compact box, the ART platform directly addresses the challenge to reduce Manufacturing CAPEX and OPEX costs. In addition, fast test times, small footprint and swift set-up times simplify ramp-up and enhance product throughput

General Specifications

Frequency Range	700MHz to 6GHz
Signal Bandwidths	1.4MHz, 3MHz, 5MHz, 10MHz, 20MHz
Transmission Schemes	OFDM, OFDMA
Traffic Types	QPSK, 16QAM, 64QAM, 256QAM
Multiplexing Types	TDD, FDD
Baseband Rates	CPRI to Rate 8 OBSAI to 10Gb/s
Error Vector Magnitude (64QAM)	Transmit: better than 2%; Receive: better than 1%
Multiple Antenna Support	2Tx/2Rx MIMO capable
Physical Dimensions	19" rack mount, 1U
Power Requirements	110V...240V AC

Software Compatibilities & Environment

Operating System	Microsoft Windows 7 (32 bit)
ATE development environment	NI LabVIEW, Visual Basic, Visual C
Installation Requirements	IVI-COM VISA
Optional Remote Control	SCPI command set
Database	MySQL

▶ Advanced Radio Tester



Other AceAxis Test & Measurement Solutions

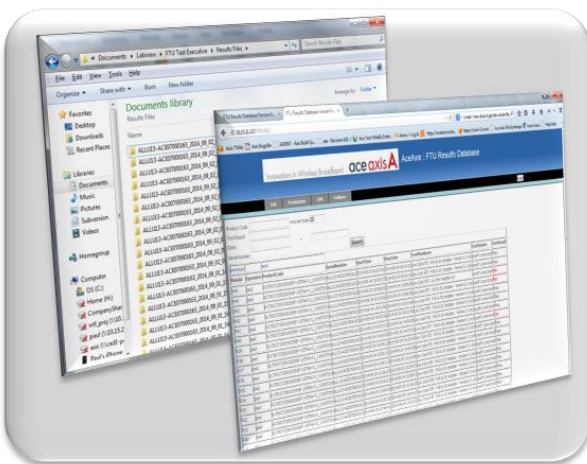
PAT Power Amplifier Tester

Assesses the linearity of transmitter line-ups, and provides implementation data for pre-distortion control loops

PINT Passive Intermodulation Tester

Detect service degradation due to cell site intermodulation problems remotely

Example Test Executive



Web-based Test Results database

Version 3.0 © 2016 AceAxis Limited
All information subject to change without notice

aceaxis

AceAxis Limited
County Park
Swindon
SN1 2NR
United Kingdom

+44 (0)1793 490 235
info@aceaxis.co.uk

www.aceaxis.co.uk